

THE



WORD

OFFICIAL NEWSLETTER OF THE
WOLSELEY CAR CLUB NEW ZEALAND INC



MAY – JUNE 2021



Some of the North Island Branch member's cars on the recent
Gentle Annie Run to Hawkes Bay

OUR CLUB OBJECTIVES:

- To promote interest in and use of Wolseley vehicles.
- To arrange social functions for the purpose of promoting the objectives of the club.
- To promote and encourage the efficient maintenance of members' vehicles.
- To render technical assistance to members.
- To produce a newsletter regularly as a vehicle for the exchange of owners experience, technical information, the sale and exchange of cars and spare parts, or any other matters of interest to members.
- To maintain a library of information on the history, maintenance, repair and modification of Wolseley cars, to be available to members.
- To maintain a central register and stock of spares which may be established to assist members.

Club website (new one) : www.wolseleycarclub.co.nz

HOW TO CONTACT US:

National President:

Gordon Duthie (Beryl)
13 Maryport Street
Lawrence, Otago 9532
Ph 03 485 9543, Fax 03 485 9053
email gbduthie@xtra.co.nz

National Secretary:

Michael Kruse (Raewynn)
297 Huatoki Street,
New Plymouth 4310
Phone 06 753 9743 (hm) 0276600203(mobile)
email kruseco@xtra.co.nz

Regalia Enquiries:

Dany & Sharon O'Malley
P O Box 75, Leeston 7576
Ph 03 324 4421
Email: dandsomalley@gmail.com

Website Coordinator:

Raewynn Kruse (Michael)
297 Huatoki Street
New Plymouth 4310
Email: kruseco@xtra.co.nz
Phone 06 753 9743

North Island Branch:

Raewynn Kruse (Michael) P O
297 Huatoki Street
New Plymouth 4310
Email: kruseco@xtra.co.nz
Ph 06 753 9743

Nelson/Marlborough:

Bryan Stansbury (Gaylene)
113 Whitby Road
Wakefield, Nelson
Phone (03) 541 8255
Email: stansburys@xtra.co.nz

Christchurch:

Stuart Penny
1 Kensington Ave
Rangiora 7400
Phone (03) 313 4454
Email stu.jude@gmail.com

Southern Region:

Fergus Sime (Mary Jane)
445 East Taieri-Allanton Rd
RD 2, Mosgiel 9092
Ph 03 4534008, 0274048468
email fergus.sime@xtra.co.nz

National Spare Parts Enquiries:

If unable to be handled by your local Branch, contact: Nick Stevenson
5 Whitewood Cres, West Melton, RD5,
Christchurch 7675.
Phone 027 431 5661
Email: wolseley.spares.nz@gmail.com

All Newsletter Enquiries:

Send to: Colin Hey (Jenny)
34 Rossington Drive
West Melton 7618
Phone (03) 359 8737 or 021883807
email: heywolseley699@gmail.com

Disclaimer: The views and opinions in this publication are personal to the authors, and not necessarily the official views of the Wolseley Car Club of NZ Inc.

EDITOR'S STUFF

With the cooler weather coming there's not as much going on at the moment, and the number of events to attend is starting to decline for the winter. Looking back, it's been a good summer and autumn, and Jenny and I have crammed a lot in. Time now to get some of the saloons out of the shed and put the veterans away for the winter. Both need an oil change and a few jobs attended to. The 12-16 needs to have the magneto removed and cleaned and re-set, and it's developed a clicking noise in one of the driveshaft universals that needs investigating. The 1909 10HP ideally needs to have the gearbox bearings adjusted. Bit more complicated, that one....

Three weeks ago a local group of Morgan enthusiasts had a garage raid to our place, so it was a good excuse to clean off the workbench and tidy up the shed a bit. Luckily it was a nice day, so I got most of the cars out of the shed, and put some of the newer ones in a line on the lawn. Fortunately most of them were all pretty clean, as I hadn't allowed myself enough time to clean them all.



Cars on the lawn at home for the Morgan visit. The white 16/60 now belongs to Murray & Sue Bethell

One car that I didn't have at home was the 6/90, which has been at Matthew's place for about 9 months while we worked on his 1500. I took Matthew's 1500 back to his house in Darfield, and drove the 6/90 home – about a 20 minute run. Matthew had kept the battery charged for me and has given it a couple of runs in that time, so it started easily. You forget how nice

they are to drive, and it's good to have it back in the shed at home again. I do need to get onto the frost plugs though – two of them are looking very corroded and weepy and need urgent replacement. I replaced one last year, so it's now time to do the whole lot. I got a torch and mirror and had a look at the ones on the back of the block and they look reasonably OK so they can wait, as I don't particularly want to pull the engine out just to replace them. Hopefully a fresh load of antifreeze won't upset them too much.

When I was at the Darfield garage getting some petrol to drive the 6/90 home, a guy came up and checked out the registration label to see what model the car was. "Oh, he said, a 6/90. My mate in Kaikoura has a Wolseley 6/110 and he's just done a lot of work on it. It's had some new pistons and the cylinder head done".

"I know the car" I said. "It will be a black one. You need to tell your mate he needs to re-join the club, we could have helped with the parts. It's only \$10 to join now".

EDITOR'S STUFF - continued

He looked a bit shocked, and said he would do that. I knew very well that it's now probably the only Wolseley in Kaikoura, and that that car was having some engine issues a couple of years ago, so I felt pretty safe telling him that. Small world!

Over the last month I've also completed work on Hazel Hay's 16/60 to get it to WOF stage. There's been a lot to do, and the cost for parts, materials and consumable items has come close to \$1,500. Most of the work has been on the brakes (a full replacement of almost everything) and transmission. I was a bit annoyed with myself because I thought I had checked it carefully before I took it for its WOF, but I didn't pick up some wear in the

driver's side king-pin thrust washers, so I had to make a return trip. Normally this is a very easy job, but I had a terrible time getting the top trunnion off the king-pin. Plenty of heat, penetrating oil, effort, and a bit of blood finally worked though. The car is now on its way to Murray and Sue Bethell in Parongia in the Waikato.

Another mission this month was to help further deal with a huge amount of BMC parts



Murray & Sue Bethell's 16/60 finally ready for its new home to the North Island

stored on a property in Christchurch (this was mentioned in a previous Wolseley Word). On the property were 5 large garden sheds, crammed full of mostly BLMC 1800, Morris Marina, Kimberley and Princess parts. Deadline day to quit the property is rapidly approaching, and parts have slowly been disappearing to interested people or to a storage unit that the owner has occupied. But lurking in the sheds were no fewer than 18 more or less complete engine/gearbox units. Getting them into those garden sheds originally must have been difficult, but getting them out was more of an issue given that various shelving units had been built above and around them. In the end I decided that the only way to deal with them easily was to get a hi-ab truck in to drag them out and then take them away. Consequently Nick and I spent a Saturday morning there emptying the sheds one at a time. We attached a chain to each engine unit and by getting the hi-ab hook as close as we could, they were dragged to the door, then picked up and put onto the truck. Nothing was damaged, and most of all it was quick and no-one was hurt moving or lifting stuff. All of the engines were then taken to the VCC spares shed (we don't have room or the ability to deal with them at Idlewood), where they can be made available to anyone who needs them at VCC prices (cheap). Despite being told they were all good units, in reality there wasn't one that I would have been happy to use as-is. They had all been sitting around for around

20 years or so, and most had had the cylinder heads removed and put loosely back on, or didn't have heads at all. With all of the engines out of the way, Nick and I then had a quick pick through the boxes and cartons of parts, and selected a few items we could accommodate at Idlewood, including some hydrolastic displacers, a couple of 1800 cylinder heads, a few trim parts, some front exhaust pipes which may be BMC items, and two brand-new 1800 front windscreens. Two weeks before this, Matthew and I had removed two very dead and extremely rusty 1800s (another major exercise) to make room for the hi-ab truck to get close to the sheds. They too went to the VCC yard. The VCC parts shed team have now gone in to and done a final sweep of parts to salvage everything useable, so now the job is done.



Eighteen BMC powerplants on a hiab ready for a move.



Introducing our new first grandson, Luke Raymond Paul Kerkhofs

Best news of all for this month is that Jenny and I are now grandparents – our daughter Sarah and husband Kevin have just had a baby boy, named Luke. This is also the first great-grandchild for my father, so quite a family occasion. This certainly does not overshadow the achievements of Raewynn and Michael Kruse, who 'produced' their first 3 grandchildren (including twins) all in the same month recently. Congratulations all!

Have a good month.
Colin Hey

PS: Apologies for all the baby photos in this edition – can't help ourselves!

Deadline for next Wolseley Word:
Friday 2nd July 2021

CHAIRMAN'S REPORT

Hi Members,

The cool frosty nights are reminding us that winter is coming. This morning (26th May) we had a -4.6 degree frost which is the hardest so far but getting a clear sunny day. This year for the first time the Executive has been having Zoom meetings approximately every two - three months as a way to involve the committee members in the management of the club. It is also a way of being able to show that there are many things happening within the club from time to time that need discussing. Discussion points or reports have principally been on Parts department, Wolseley Word, Membership, Web site, Facebook, National Rally. In the main there has been good attendance with the meetings lasting 30 – 35 minutes. Thanks to those of you who have participated.

Other things, at the moment Lawrence is hosting the NZ Century Farms and Station Awards. This is all about celebrating those who have been on a property farming in the same family for 100 plus years. This was started in Lawrence about 16 years ago and has developed to the point that it is now run over two weekends because of numbers. The Tuapeka Vintage Club that I am involved in has always had a part to play in decorating the large hall where the main event is held and parking cars on that night. It has now grown to the point that the Friday night get together is now held at the Vintage Club so just about everything has to be moved out of one building to transform it into a lounge



Tuapeka taxi service – three great classics!

come bar
come dining
etc area. We
also set up a
display of
tractors on
grounds near
the entrance to
the town. We
also supply
classic cars at
no charge to

act as a taxi service collecting those who wish to be taken to and from the Friday and Saturday night do's. I received an E,mail from one person I transported that it was the best taxi ride south of London. I also drive a bus for the tour of the district on the Saturday. The weekend of the 29th completes this year's celebrations. That's all from me, till next time keep warm.

Regards, Gordon.

Wolseley Car Club National Rally 2022 The Amazing West Coast of the South Island. Advance Notice

Yes, it's time to start getting organised for our next New Zealand National and Australasian rally – we're all hanging out for one given that the Australian National Rally proposed for Adelaide in May had to be cancelled due to the ongoing uncertainties around COVID.

The Rally will be based in Greymouth on the West Coast of the South Island, **beginning on Sunday 6th March 2022, finishing on Friday morning 11th March**. There will be connecting runs from and to Christchurch on the first and last days over each alpine pass for those who want to begin their West Coast adventure there.

Proposed highlights of the Rally will include a bus trip to Franz Josef on the Monday, visits to the amazing Westland Industrial Heritage Park in Hokitika, Shantytown just out of Greymouth, the cool blue waters of the Hokitika Gorge, the Punakaiki blowholes and visitors centre, and much more.

We can guarantee you a great time, but maybe not fine weather every day, but we will do our best.

Discussions are nearly finalised with two great accommodation providers in Greymouth – the Coleraine Suites and Apartments (which is proposed to be our main accommodation venue), and the Recreation Hotel right over the road from the Coleraine, which can provide more budget accommodation and is the proposed main dinner venue. Booking details and prices will be in next month's newsletter.

Book in the dates now – updates will follow each month.



SECRETARY'S REPORT

Hi Fellow Wolseleyites,

On the family front Raewynn and I had a visit from our daughter Victoria and the twins Michael & Madeleine. Boy do they grow up fast they are now holding their heads up on their own.

Our son Jeremy and his partner Elisa had a baby boy on 8th May. They almost made it to the hospital, Kyan Jeremy Kruse was born in the Hospital Car park with help from the nursing staff!!!!



Kyan Jeremy Kruse



We have a trip to Brisbane planned for early July to catch up with them.

We go from having no Grandchildren to 3 in the short space of 3 months.

Now to the Wolseley front, Sharon and Danny O'Malley have been doing a fantastic job in selling and sending out Wolseley Regalia my number plate surrounds arrived today and the look great.

The North Island Branch had a Run 22nd of May from Taihape to Napier by all reports it was a success. An account of the run will follow as I did not go on the run.

Looking forward the branch have Working Bee at Graham Bennett's place in Porirua. We



have two 6/90s to part out and a 1500 to sort out. It will be on Saturday 12th of June.

Graham & Mark Bennett looking at one of the 6/90s - they have been in Featherston for 20 years
Happy Wolseleying
Michael Kruse.

REGALIA SALES AND LIBRARY LOANS

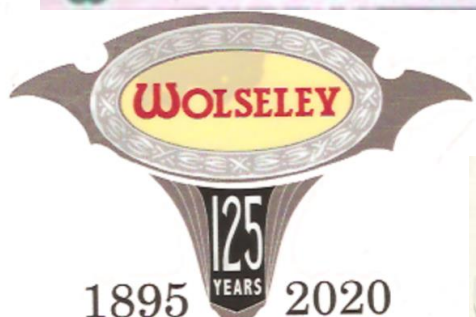
For any Wolseley Car Club regalia (caps, shirts, badges, books etc), and for any Wolseley-related books or technical information, please contact Danny or Sharon O'Malley on 03 3244421 or 021 498 162 phone or text.

Sharon can also provide copies of handbooks, workshop manuals, and parts books for most Wolseley models, either to loan or photocopies. Some general information Wolseley-related books are also available to loan – please just ask him.

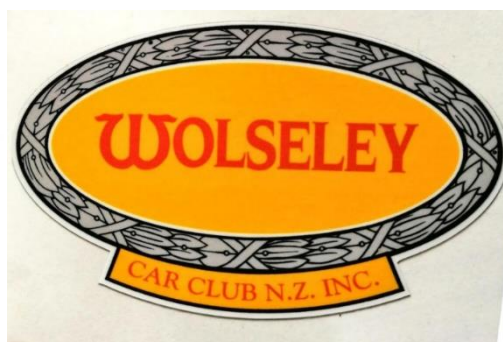
Now in stock:



Rear window stickers as shown on left – “My Other Car’s a Wolseley, and “I Bought Wisely – Wolseley” These are \$5.00 each



Windscreen sticker – special design to celebrate 125 years of Wolseley. Limited numbers \$5.00 each



Our very own NZ Club windscreen stickers, also \$5.00 each



A variety of other items, including grille badges, lapel badges, key rings, coasters and fridge magnets.



And not quite last, but by no means least, a brand new addition to stock – a special **pin badge** (for jackets, caps etc) commemorating 125 years of our marque. The first shipment of these has run out – more in transit. Make sure you get your order in quickly. These are priced at \$10 each

New Items:

Ladies Blouse. \$65.00

We have a choice of colours. Photo's on next page.

Men Sweatshirt \$40.00

Bucket hat \$20.00 in

Bottlegreen

Beanies in Bottle green and Black. Wool Blend Beanie \$20.00

Acrylic Beanie \$15.00

Wolseley Registration Label holders (for your windscreen) \$5.00 each



REGALIA - continued..

Registration Labels \$5.00
Ladies Blouse
Beanies



Ladies Blouse



Beanie with Wolseley Car Club on it
Wool Blend \$20.00
Acrylic \$15.00

\$65.00



Also newly produced:

Caps, Tee shirts and Polo shirts. These are only getting made to order:

Tee shirts \$25.00

Polo shirts \$35.00

Cap \$20.00

The caps will be bottle green with "Wolseley Car Club N.Z." in white across the front.



Both shirts are bottle green, and the picture (left) has the emblem that will be embroidered on the top left chest.

Number Plate surrounds:

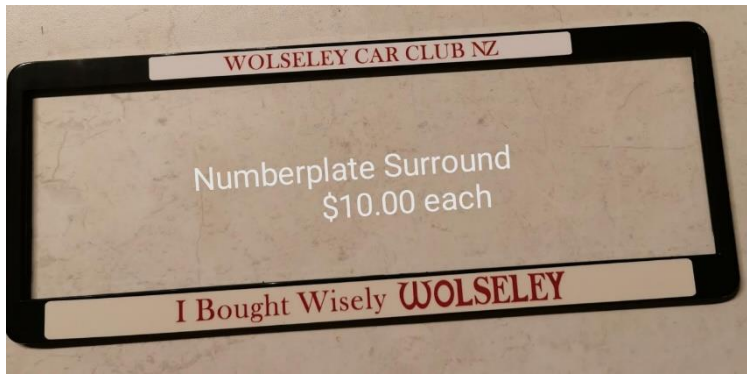


Photo on the right shows what it looks like on a car – this is on Simon Verkerk’s Wolseley 1500 ‘Special’

Email orders to dandsomalley@gmail.com , with Name and size please.

Wanted:

Photos of your Wolseley, your restoration project, or just good photos of an outing you've been to with the club. Please just email them to me at: heywolseley699@gmail.com

or post hard copy to me to 34 Rossington Drive, West Melton 7618. Please provide me with a simple caption. If you can pen together a quick story to go with it, so much the better.

BRANCH NEWS and EVENTS

North Island Regional Branch News and Events

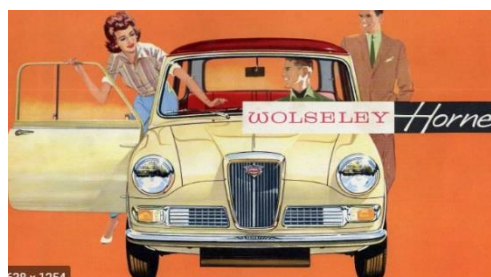
Hi everybody hope this report finds you all well and keeping warm. This month has seen a North Island Wolseley Car club event Taihape – Napier (Gentle Annie run) held on the 22nd May, this event was a great success, thank you Winton and Ruth for organising.

Upcoming events

Working Bee on June 12th at Graham Bennetts place in Porirua 10am, to dismantle 2 - 6/90's and moving a 1500 to parts shed in Ashurst. Please call or email Michael for further information. 0276600203, kruseco@xtra.co.nz. Lunch will be provided. For all those Wolseley Car members that are part of the VCC a reminder about the Vero International Rally that is to be held in Taranaki next year. All information for this rally is on the VCC Website and is worth a look. www.vcc.org.nz
Also a reminder that if you have anything to go on the Wolseley Car Club Website please let me know, I cant put up information if I am not informed. www.wolseleycarclub.co.nz. Go check the website out.

Have a nice month and keep warm.

Regards Raewynn



REPORT ON NORTH ISLAND BRANCH GENTLE ANNIE RUN

Sixteen members and one visitor assembled in the Taihape Railway station carpark on Saturday 22 May, together with a fine collection of Wolseley cars. The weather was cold and sunny as we started the drive through mostly farming country towards Napier.

The road is good and the scenery amazing, and is dotted with rivers and streams as well as forestry. We arrived at the Blowhard Bush Scenic Reserve for lunch, having been escorted for the last few kilometres by Bob Ackerley from the Hawkes Bay VCC who organised our programme in Napier.

Once reaching Napier we went to the very interesting Lemmon Family Trust private museum of colonial and farming artefacts, as well as an amazing collection of vintage vehicles collected over many years. Then we were given route instructions to the Quality Inn on Marine Parade, and all met up for happy hour and dinner at Drift Restaurant.

On Sunday we went out to the Clearview Estate Winery and were given a very informative talk on their wine production, as well as a tasting of 8 of their wines. Their wine shop did very well and their café was full of people having brunch. Then it was on to the Hygge Café for lunch. This is a large old house overlooking Clifton Bay and is very popular with locals and visitors. At this stage we said goodbye to the Belchers from Tauranga who needed to get back home before nightfall.

Next was an interesting drive through the countryside past Craggy Range winery down to a large cattle and sheep farm with such steep terrain they use horses to get around. This is home to Martie's Red Shed which is home to another great colonial collection of their family stuff dating back to the 1840s.

From there we went our various ways, with some calling in to the honey shop. Eight



members went to the Indonesian Restaurant for dinner and stayed another night in Napier. A very enjoyable weekend was had by all, with many thanks to Bob for all his work on our behalf.

Winton & Ruth Cleal

At the Hygge Café for lunch on the Sunday – more photos on Pages 19 – 22.

BRANCH NEWS and EVENTS – North Island Branch, contd..

Upper North Island:

Coming Event – Meal and Movie Day, 26th June

An invitation to all Wolseley members to an event being hosted by the Rover Car Club on Saturday 26th June 2021 - Lunch meal and movie at Ryders 177 Riversdale Road, Avondale. The cost is \$35.00 per adult and \$15.00 per child under 14. This includes the roast dinner, dessert and movie. We are having the meal at 12.30 p.m. for a 2 p.m. movie. Please advise Noeline Billing on 0274531049 or 9639516 by 19th June 2021 with numbers.

Regards

Noeline Billing

BRANCH NEWS and EVENTS – Christchurch Branch.

Christchurch Branch News and Events

Our big event for the month was held on Sunday 16th May, and was a joint event with the Jowett and Riley Car Clubs based around our clubrooms at Idlewood, McLeans Island. It all began by meeting at the monthly VCC Old Cars Bikes & Coffee event just down the road from Idlewood – an event that is now growing a bit of momentum and attracting around 70+ vehicles each month. Most of our run participants arrived there before 10am to grab a coffee and mingle around the other vehicles, and then at 10.30 everyone was given a set of instructions for the morning run. This took them on a route from the VCC grounds, through the back of the Templeton area, on to Halswell, and then back to McLeans Island to finish at Idlewood in time for lunch. There were 8 questions to answer along the way. Back at Idlewood the weather was just warm enough to sit around outside in partial sun, and for those who needed a little more warmth the gas heaters were cranked up in the garage area.

At 12.30 the field tests got underway – seven simple tests which would ultimately sort out the winners for the day. Firstly the driver had to guess the tyre pressure in the right-front wheel, and then identify two parts inside a small closed fabric bag – one was a temperature transmitter and the other was a rocker arm. Then they moved on to two parking tests – one forward and one reverse, and then directed Ray Willoughby, who was at the other end of the course, to set the height of a rope spanning two high poles to match the height of their car. They then moved forward to throw 5 hubcaps from the drivers' door to try and hit 5 cones as they drove forward. This was a lot harder than it looked. They then passed under the rope and the difference in height between the rope and the car was recorded.

After everyone had run through the course it was time for an early afternoon tea, and the awards for first place and runner-up were presented. These went to Riley and Jowett owners, who both won a bottle of wine to take home and settle their nerves.

BRANCH NEWS and EVENTS – Christchurch Branch, continued



Line-up of Wolseleys and Rileys await field tests



Above, Jonathan Gaut instructs guides a Jowett on the reversing course.

Right, Ray Willoughby (right) checks Lou Schoenmaekers skills at guessing the height of a 6/80 from a distance – Merv Wayne loaned him the car for the field tests.



Both clubs sent emails to say how much they enjoyed the day, and it was indeed good to share a fun and friendly event with them both. Around 25 cars took part – probably around equal numbers for each club. For many of the Riley Club owners, it was their first look through our facilities and spares store, and all were thoroughly impressed. A note too to say thanks to all of our members who helped to get Idlewood ready before the event, and those who helped run the cars through the field tests.

It was especially pleasing to get a visit from Lou and Ans Schoenmaekers who had come all the way from Whangarei for a visit and to collect some parts for their 6/80 from Idlewood.

BRANCH NEWS and EVENTS – Christchurch Branch, continued

On Sunday 6th June a few of us joined with the Jowett Club members again to attend a ‘lunch and learn’ at the Caravan Club (adjacent to Idlewood and our ‘landlord’) with many of their members. Our cars were put on display outside their clubrooms, and we were entertained with rickshaw rides, a meat raffle, and a first-aid demonstration explaining how to use their AED (very good to know there is one very close to our clubrooms). We then enjoyed a very extensive shared lunch – there was plenty of food and plenty of opportunity to chat to everyone there – an enjoyable event. On the same day a couple of our members (Simon Verkerk and Joe Barker) ventured down to Timaru to take part in the All British Day down there – a chance to see some of the devastation dealt out by the weather-bomb that hit South Canterbury the weekend before.



Some of our cars parked in the Caravan Club grounds.

And no, I haven't cut the Six up and turned it into a ute – just an unfortunate placement of an umbrella!

I haven't a lot of gossip on the member front, except maybe the following:

- Nick Stevenson has just taken delivery of Michael and Raewynn Kruse's Wolseley Hornet #2, which they originally bought off Jenny and I about 15 years ago. Now sporting a 1275 engine which Michael installed, Nick is hoping to turn it into a father-son project for his son. Nick has said that secretly his son really wants a Nissan 350Z, but reckons he'll be so totally besotted by the performance of the Hornet when it's up and running again



BRANCH NEWS and EVENTS – Christchurch Branch, continued

that all such desires will quickly be forgotten. Nick has also taken delivery of a full set of very good Wolseley Six upholstery from the Christchurch BMC cleanout mentioned in the *Editor's Stuff*, which will replace the very dishevelled set in his Six as purchased.

- Lionel Cook recently purchased a very nice Austin A105 (pre-Farina shape) which is fitted with an original but non-working overdrive gearbox. Club spares supplied a replacement governor and kick-down switch which fixed a couple of the faults with the overdrive and helped enable it to be restored to working order. Lionel reckons this has made the car so much better to drive, as it should.
- Robbie Grieve is close to getting his 1100 back on the road, having just completed some major work on the rear suspension and a few other jobs required for a WoF after a long period off the road.
- On hearing that the post-COVID delays for automobile ECUs and other components has held up the delivery of the new Police Skoda fleet, Danny O'Malley decided to offer his very low mileage example to them. It's now been decked out in all the required livery and will shortly enter service. There will be no more escaping Police chases with this car on patrol – by the time the Police get it push-started the crims will be rolling around on the ground in laughter and easy to apprehend. Apparently the Police are a bit confused though about which end the Police dogs will sit in.



- Derek Brehaut has now got his amazingly restored 6/90 back on the road and it's now vic-ed and vin-ed and fully roadworthy with a WoF and registration. He's busy getting it run in and getting some miles on it, and sorting out some very minor issues that have come to light – as happens with every full re-build. He reports that it feels very tight and beautiful to drive, and is completely pleased with the

BRANCH NEWS and EVENTS – Christchurch Branch, continued

outcome. Whilst reading through the latest copy of the VCC North Otago branch magazine, I came across the following article:

Sitting up in bed, cuppa at the ready, on a beautiful Sunday morning. What shall we do today? How about a 'running in run' to Kurow for lunch?

Our Wolseley 6/90 is finally road legal after a complete rebuild and years of ownership. So with "Running in Please Pass" firmly sellotaped to the back window, away we went. It had already been driven from VINZ Timaru, home to Oamaru with no hiccups!!!

All was going well so we decided to drive to Omarama for lunch, however, time constraints caused a revised route over Benmore Dam, and round the back of Lake Aviemore. We had been discussing how the fuel pump was noisy but the gauge was showing half full, so the penny didn't drop till we had absolutely run out of fuel. Now what! We were about 5 ks back to Otematata. At least the car was sitting in the sun and off the road.

Being a club member of our local VCC Branch was our saving grace. By an absolute fluke, members Lindsay and Margaret McLeod became our knights in shining armour as they were at their property in Otematata making ready to head home to Oamaru.

The rest is history and caught on camera for family members to 'take the micky' out of their Dad.

Lee Brehaut



Needless to say, we got an email from him last week asking if we could supply a replacement fuel tank sender. Of course we could.....

Colin Hey



Work continues in 'Rotten Row' at Idlewood. Jonathan Gaut, Merv Wayne? Tony Shanks and Eddie Bishop pondering the removal of the radiator from a spares 6/80.

Christchurch Branch Coming Events:

Saturday 12th June - Working Bee at Idlewood.

The usual working bee/social opportunity/parts buying and sorting session. Starts about 9.30am. Morning tea is provided, and those who wish can stay on for lunch and the branch committee meeting straight afterwards.

We have a couple of recent parts car arrivals, so any help dismantling those would be appreciated.

Sunday 20th June - Old Cars Bikes and Coffee (OCBC) meet at the VCC grounds.

Afterwards we may do a run to a pub for lunch, followed by an outing on the Diamond Harbour Ferry to blow the winter cobwebs out. Keep an eye on your emails a few days beforehand for confirmation and details.

Saturday 10th July - Working Bee at Idlewood

Same details as for 12th June (above).

Sunday 11th July - possible 'Man Cave' run.

Details will follow.

Sunday 25th July - Christchurch Branch Lunch and AGM at Idlewood.

We'll meet for a simple lunch of savouries, soups and breads (supplied) and then get into the AGM to review the year that's been and then plot out our next 12 months. Please keep this date available – we really need and value the input of all of our Branch members.

Check next month's newsletter and emails for more details.

For your diary:

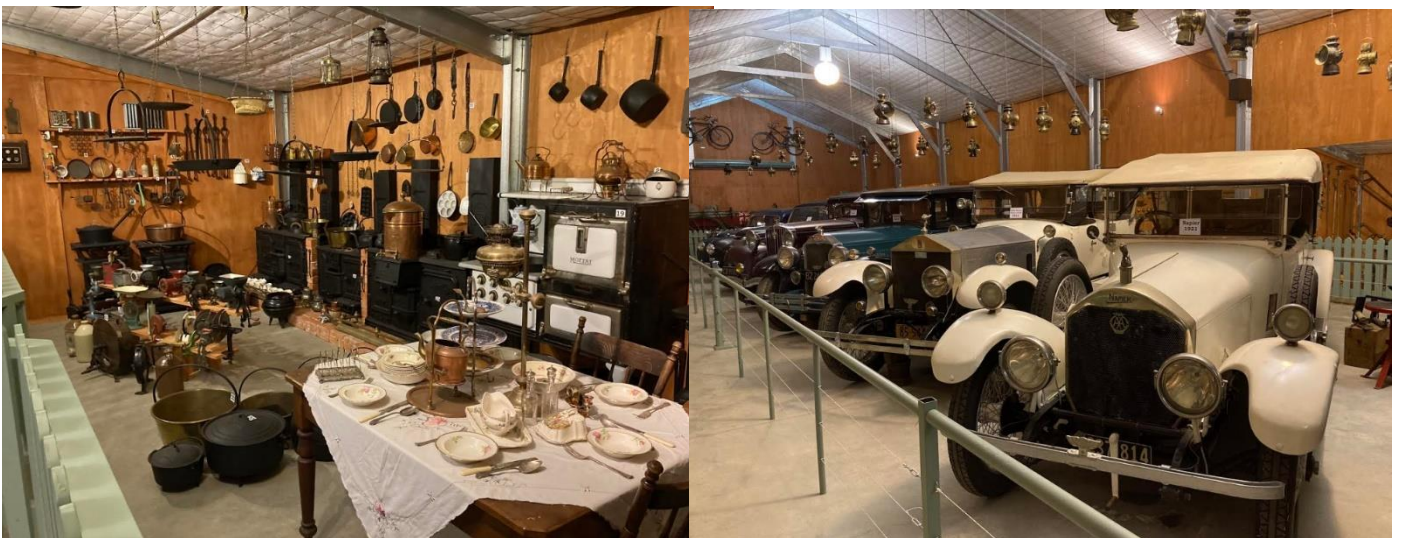
Sunday 22nd August - Daffodil Rally.

This year there will be 4 start destinations – Rangiora, New Brighton, Cashmere and Rolleston, with all runs converging at the VCC grounds, at McLeans Island. Please put this date in your calendar now – it will be a big event this year.



Photo Gallery

More Photos from the Gentle Annie Run to Hawkes Bay (see Page 12)



The amazing Lemmon Family Trust private museum of colonial and farming artefacts

Photo gallery, contined



Photo gallery, contined

This should be posted in all schools and work places.

Love him or hate him, he sure hits the nail on the head with this! Bill Gates recently gave a speech at a High School about 11 things they did not and will not learn in school. He talks about how feel-good, politically correct teachings created a generation of kids with no concept of reality and how this concept set them up for failure in the real world.



Rule 1: Life is not fair - get used to it!

Rule 2 : The world won't care about your self-esteem. The world will expect you to accomplish something BEFORE you feel good about yourself.

Rule 3 : You will NOT make \$60,000 a year right out of high school. You won't be a vice-president with a car phone until you earn both.

Rule 4 : If you think your teacher is tough, wait till you get a boss.

Rule 5 : Flipping burgers is not beneath your dignity. Your Grandparents had a different word for burger flipping: they called it opportunity.

Rule 6: If you mess up, it's not your parents' fault, so don't whine about your mistakes, learn from them.

Rule 7: Before you were born, your parents weren't as boring as they are now. They got that way from paying your bills, cleaning your clothes and listening to you talk about how cool you thought you were. So before you save the rain forest from the parasites of your parent's generation, try delousing the closet in your own room.

Rule 8: Your school may have done away with winners and losers, but life HAS NOT. In some schools, they have abolished failing grades and they'll give you as MANY TIMES as you want to get the right answer. This doesn't bear the slightest resemblance to ANYTHING in real life.

Rule 9: Life is not divided into semesters. You don't get summers off and very few employers are interested in helping you FIND YOURSELF. Do that on your own time.

Rule 10: Television is NOT real life. In real life people actually have to leave the coffee shop and go to jobs.

Rule 11: Be nice to nerds. Chances are you'll end up working for one.

If you agree, pass it on. If you can read this - Thank a teacher!

Photo gallery, contined

And a couple more shots from Merv Wayne taken at the Jowett/Riley/Wolseley day at Idlewood



Buy & Sell

1968 6/110 For Sale

Car is in Hastings and has been owned by the same man for 50 years. Has clocked up 78,000 miles and is an Auto . Still has current WAF and still being driven. Needs a little TLC. Has dent on drivers side rear and a small amount of rust in one place on rear window. Paint light green not 100% but origina . Has had brakes reconditioned including booster. Indicator stalk need attention.

Contact Ivan McCutcheon windrode140@ gmail.com 063746326

Or owner Rex Ingram 068787609



16/60 for Sale

Car is in Christchurch and in very good condition, manual gearbox, teal in colour. More details and photos available soon, but if you're interested please contact Stuart Penny, Chch Branch Secretary, Ph(03) 313 4454

The  *Word*

**OFFICIAL NEWSLETTER OF THE
WOLSELEY CAR CLUB NEW ZEALAND INC**

If unclaimed, please return to:

The National Secretary
Michael Kruse
297 Huatoki Street,
New Plymouth 4310

Registered at Post Office HQ Wellington as a Magazine